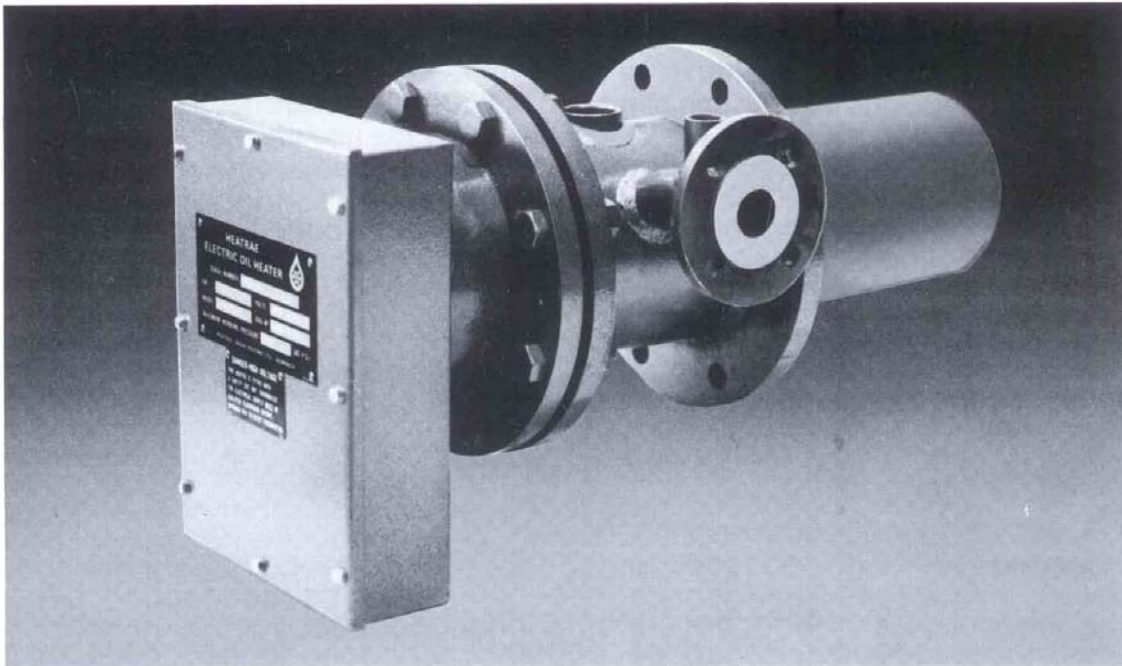


Inline Oil Heaters



Features:

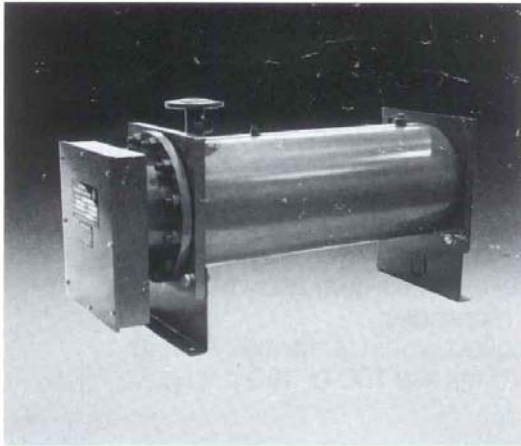
- ★ Removable core type elements (can be removed without draining system)
- ★ Suitable for oils with viscosities up to 3500 second redwood No. 1 fuel oil at 38°C
- ★ Compact-economy of heater size.

FHE Series Electric Oil Outflow Heaters.

Application: These line heaters are offered primarily for oil preheating applications, burner preheaters, oil separators etc. They are also suitable for meeting all, non-corrosive liquid line heating requirements when electricity is the sole heat source available.

Specification:

- ★ Standard range from 6 to 180kW
- ★ Working pressures up to 4 Bar
- ★ Complete with control and limit thermostats
- ★ Watts density complies with BS799 part 5 1975
- ★ Suitable for electrical supplies of 220V, 230/250V, 380V, 400/440V and up to 550V A.C.
- ★ Available for single phase, three phase (3 or 4 wire) A.C. and for D.C. supplies.
- ★ Working temperatures up to 150°C
- ★ IP55 terminal boxes
- ★ Electrical stage control
- ★ All welded mild steel construction



LHE Series Electric Oil Line Heaters.

Application: These line heaters are offered primarily for oil-preheating applications: burner preheaters, oil separators etc. They are also suitable for meeting all, non-corrosive, liquid line heating requirements. For use when electricity is the sole heat source available.

Features:

- ★ Removable core type elements (can be removed without draining system)
- ★ Suitable for oils with viscosities up to 3500 second redwood No. 1 fuel oil at 38°C
- ★ Compact-economy of heater size.

Specification:

- ★ Standard range from 6 to 180kW
- ★ Working temperatures up to 150°C
- ★ Working pressures up to 10 Bar
- ★ IP55 terminal box
- ★ Complete with control thermostat, master thermostat and pressure relief valve
- ★ Electrical stage control
- ★ Watts density complies with BS799 part 5 1975
- ★ Suitable for electrical supplies of 220V, 230/250V, 380V, 400/440V and up to 550V A.C.
- ★ Available for single phase, three phase (3 or 4 wire) A.C. and for D.C. supplies
- ★ All welded mild steel construction